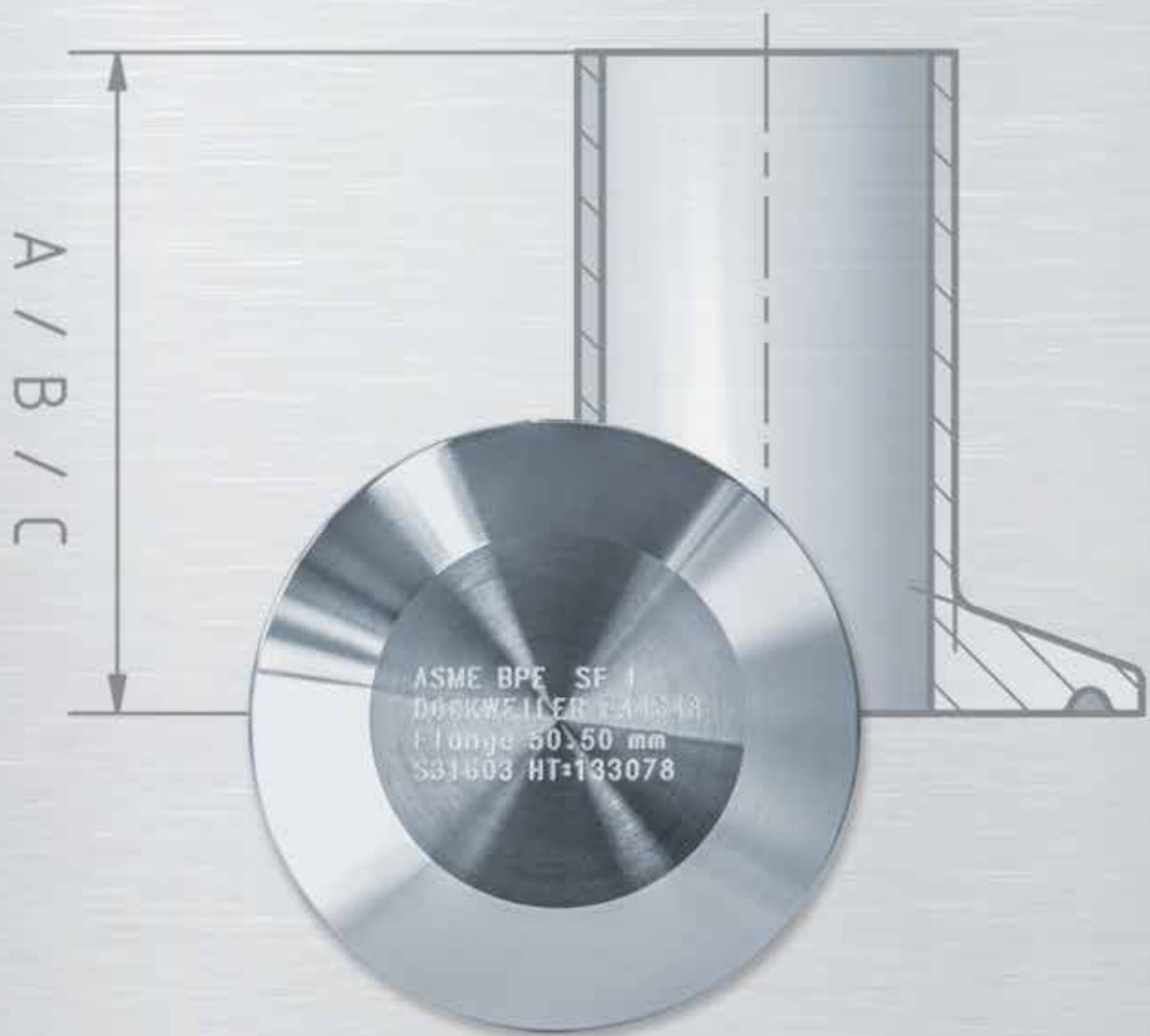


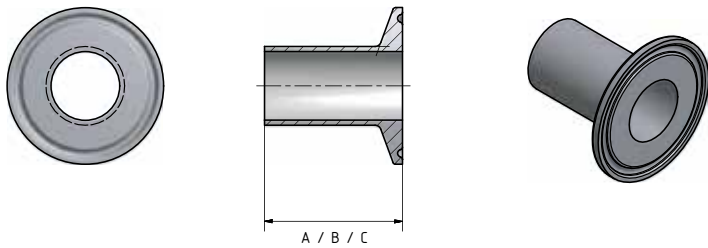
# FERRULES AND CAPS

## STUTZEN UND KAPPEN



## DT-4.1.4-1 (DT-22) AUTOMATIC TUBE WELD: FERRULE

DT-4.1.4-1 (DT-22) MIT ANSCHWEISSENDEN: STUTZEN



All prices ex works  
Alle Preise ab Werk

| Nominal Size (d) /<br>Nennweite |        | A     |      | Clamp Dimensions /<br>Klammerabmessung |       | Order Code / Artikel-Nr.<br>Price / Preis |   |
|---------------------------------|--------|-------|------|--|-------|---|---|
| Inch                            | mm     | Inch  | mm   | Inch                                   | mm    | SF1                                       | SF4                                       |
| 1/4                             | 6,35   | 1,750 | 44,5 | 0,984                                  | 25,0  | <b>4-1Aa1</b><br>On request / auf Anfrage | <b>4-1Aa4</b><br>On request / auf Anfrage |
| 3/8                             | 9,53   | 1,750 | 44,5 | 0,984                                  | 25,0  | <b>4-1Ab1</b><br>On request / auf Anfrage | <b>4-1Ab4</b><br>On request / auf Anfrage |
| 1/2                             | 12,70  | 1,750 | 44,5 | 0,984                                  | 25,0  | <b>4-1Ac1</b><br>11,08 €                  | <b>4-1Ac4</b><br>17,58 €                  |
| 3/4                             | 19,05  | 1,750 | 44,5 | 0,984                                  | 25,0  | <b>4-1Ad1</b><br>11,08 €                  | <b>4-1Ad4</b><br>17,58 €                  |
| 1                               | 25,40  | 1,750 | 44,5 | 1,984                                  | 50,5  | <b>4-1Ae1</b><br>12,46 €                  | <b>4-1Ae4</b><br>20,60 €                  |
| 1 1/2                           | 38,10  | 1,750 | 44,5 | 1,984                                  | 50,5  | <b>4-1Af1</b><br>13,95 €                  | <b>4-1Af4</b><br>22,09 €                  |
| 2                               | 50,80  | 2,250 | 57,2 | 2,516                                  | 64,0  | <b>4-1Ag1</b><br>18,80 €                  | <b>4-1Ag4</b><br>29,56 €                  |
| 2 1/2                           | 63,50  | 2,250 | 57,2 | 3,047                                  | 77,5  | <b>4-1Ah1</b><br>29,35 €                  | <b>4-1Ah4</b><br>43,80 €                  |
| 3                               | 76,20  | 2,250 | 57,2 | 3,579                                  | 91,0  | <b>4-1Ai1</b><br>36,16 €                  | <b>4-1Ai4</b><br>52,98 €                  |
| 4                               | 101,60 | 2,250 | 57,2 | 4,682                                  | 119,0 | <b>4-1Aj1</b><br>49,84 €                  | <b>4-1Aj4</b><br>70,47 €                  |
| 6                               | 152,40 | 3,000 | 76,2 | 6,570                                  | 167,0 | <b>4-1Ak1</b><br>143,86 €                 | <b>4-1Ak4</b><br>172,65 €                 |

Further dimensions on request. Subject to alteration.  
Weiter Abmessungen auf Anfrage. Technische Änderungen vorbehalten.

## DT-4.1.4-1 (DT-22) AUTOMATIC TUBE WELD: FERRULE

DT-4.1.4-1 (DT-22) MIT KLEMMSTUTZEN: STUTZEN

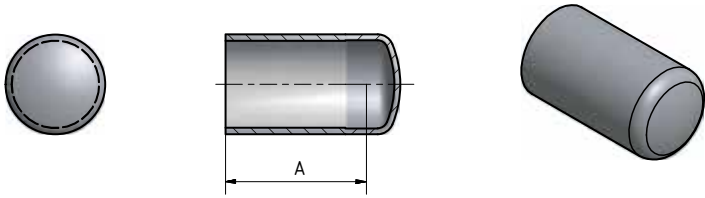
All prices ex works  
Alle Preise ab Werk

| Nominal Size (d) /<br>Nennweite |        | B     |       | Clamp Dimensions /<br>Klammerabmessung |       | Order Code / Artikel-Nr.<br>Price / Preis |   |
|---------------------------------|--------|-------|-------|--|-------|---|---|
| Inch                            | mm     | Inch  | mm    | Inch                                   | mm    | SF1                                       | SF4                                       |
| 1/4                             | 6,35   | 1,130 | 28,7  | 0,984                                  | 25,0  | <b>4-1Ba1</b><br>On request / auf Anfrage | <b>4-1Ba4</b><br>On request / auf Anfrage |
| 3/8                             | 9,53   | 1,130 | 28,7  | 0,984                                  | 25,0  | <b>4-1Bb1</b><br>On request / auf Anfrage | <b>4-1Bb4</b><br>On request / auf Anfrage |
| 1/2                             | 12,70  | 1,130 | 28,7  | 0,984                                  | 25,0  | <b>4-1Bc1</b><br>6,44 €                   | <b>4-1Bc4</b><br>10,50 €                  |
| 3/4                             | 19,05  | 1,130 | 28,7  | 0,984                                  | 25,0  | <b>4-1Bd1</b><br>6,44 €                   | <b>4-1Bd4</b><br>10,50 €                  |
| 1                               | 25,40  | 1,130 | 28,7  | 1,984                                  | 50,5  | <b>4-1Be1</b><br>7,59 €                   | <b>4-1Be4</b><br>12,66 €                  |
| 1 1/2                           | 38,10  | 1,130 | 28,7  | 1,984                                  | 50,5  | <b>4-1Bf1</b><br>7,59 €                   | <b>4-1Bf4</b><br>13,64 €                  |
| 2                               | 50,80  | 1,130 | 28,7  | 2,516                                  | 64,0  | <b>4-1Bg1</b><br>9,58 €                   | <b>4-1Bg4</b><br>16,65 €                  |
| 2 1/2                           | 63,50  | 1,130 | 28,7  | 3,047                                  | 77,5  | <b>4-1Bh1</b><br>14,94 €                  | <b>4-1Bh4</b><br>26,05 €                  |
| 3                               | 76,20  | 1,130 | 28,7  | 3,579                                  | 91,0  | <b>4-1Bi1</b><br>16,51 €                  | <b>4-1Bi4</b><br>29,62 €                  |
| 4                               | 101,60 | 1,130 | 28,7  | 4,682                                  | 119,0 | <b>4-1Bj1</b><br>23,28 €                  | <b>4-1Bj4</b><br>39,47 €                  |
| 6                               | 152,40 | 1,500 | 38,1  | 6,570                                  | 167,0 | <b>4-1Bk1</b><br>99,56 €                  | <b>4-1Bk4</b><br>134,64 €                 |
| Nominal Size (d) /<br>Nennweite |        | C     |       | Clamp Dimensions /<br>Klammerabmessung |       | Order Code / Artikel-Nr.<br>Price / Preis |   |
| Inch                            | mm     | Inch  | mm    | Inch                                   | mm    | SF1                                       | SF4                                       |
| 1/4                             | 6,35   | 0,500 | 12,7  | 0,984                                  | 25,0  | <b>4-1Ca1</b><br>On request / auf Anfrage | <b>4-1Ca4</b><br>On request / auf Anfrage |
| 3/8                             | 9,53   | 0,500 | 12,7  | 0,984                                  | 25,0  | <b>4-1Cb1</b><br>On request / auf Anfrage | <b>4-1Cb4</b><br>On request / auf Anfrage |
| 1/2                             | 12,70  | 0,500 | 12,7  | 0,984                                  | 25,0  | <b>4-1Cc1</b><br>4,13 €                   | <b>4-1Cc4</b><br>8,14 €                   |
| 3/4                             | 19,05  | 0,500 | 12,7  | 0,984                                  | 25,0  | <b>4-1Cd1</b><br>4,13 €                   | <b>4-1Cd4</b><br>8,14 €                   |
| 1                               | 25,40  | 0,500 | 12,7  | 1,984                                  | 50,5  | <b>4-1Ce1</b><br>6,03 €                   | <b>4-1Ce4</b><br>11,06 €                  |
| 1 1/2                           | 38,10  | 0,500 | 12,7  | 1,984                                  | 50,5  | <b>4-1Cf1</b><br>6,03 €                   | <b>4-1Cf4</b><br>12,05 €                  |
| 2                               | 50,80  | 0,500 | 12,7  | 2,516                                  | 64,0  | <b>4-1Cg1</b><br>8,09 €                   | <b>4-1Cg4</b><br>15,13 €                  |
| 2 1/2                           | 63,50  | 0,500 | 12,7  | 3,047                                  | 77,5  | <b>4-1Ch1</b><br>10,90 €                  | <b>4-1Ch4</b><br>21,93 €                  |
| 3                               | 76,20  | 0,500 | 12,7  | 3,579                                  | 91,0  | <b>4-1Ci1</b><br>11,23 €                  | <b>4-1Ci4</b><br>24,23 €                  |
| 4                               | 101,60 | 0,625 | 15,9  | 4,682                                  | 119,0 | <b>4-1Cj1</b><br>16,68 €                  | <b>4-1Cj4</b><br>32,74 €                  |
| 6                               | 152,40 | 0,750 | 19,05 | 6,570                                  | 167,0 | <b>4-1Ck1</b><br>77,19 €                  | <b>4-1Ck4</b><br>111,83 €                 |

Further dimensions on request. Subject to alteration.  
Weiter Abmessungen auf Anfrage. Technische Änderungen vorbehalten.

## DT-4.1.5-1 (DT-30) AUTOMATIC TUBE WELD: CAP

DT-4.1.5-1 (DT-30) MIT ANSCHWEISSENDEN: ENDKAPPE



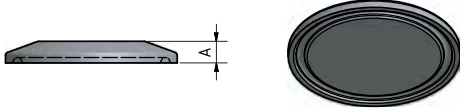
All prices ex works  
Alle Preise ab Werk

| Nominal Size (d) /<br>Nennweite |        | A     |       | Order Code / Artikel-Nr.<br>Price / Preis |  |
|---------------------------------|--------|-------|-------|---|--|
| Inch                            | mm     | Inch  | mm    | SF1                                       | SF4                                      |
| 1/2                             | 12,70  | 1,500 | 38,10 | <b>5-1c1</b><br>8,17 €                    | <b>5-1c4</b><br>13,95 €                  |
| 3/4                             | 19,05  | 1,500 | 38,10 | <b>5-1d1</b><br>7,76 €                    | <b>5-1d4</b><br>13,81 €                  |
| 1                               | 25,40  | 1,500 | 38,10 | <b>5-1e1</b><br>8,50 €                    | <b>5-1e4</b><br>15,55 €                  |
| 1 1/2                           | 38,10  | 1,500 | 38,10 | <b>5-1f1</b><br>10,65 €                   | <b>5-1f4</b><br>18,73 €                  |
| 2                               | 50,80  | 1,500 | 38,10 | <b>5-1g1</b><br>12,22 €                   | <b>5-1g4</b><br>21,31 €                  |
| 2 1/2                           | 63,50  | 1,500 | 38,10 | <b>5-1h1</b><br>16,92 €                   | <b>5-1h4</b><br>30,04 €                  |
| 3                               | 76,20  | 1,750 | 44,50 | <b>5-1i1</b><br>23,53 €                   | <b>5-1i4</b><br>38,74 €                  |
| 4                               | 101,60 | 2,000 | 50,80 | <b>5-1j1</b><br>30,38 €                   | <b>5-1j4</b><br>48,68 €                  |
| 6                               | 152,40 | 2,500 | 63,50 | <b>5-1k1</b><br>On request / auf Anfrage  | <b>5-1k4</b><br>On request / auf Anfrage |

Further dimensions on request. Subject to alteration.  
Weiter Abmessungen auf Anfrage. Technische Änderungen vorbehalten.

## DT-4.1.5-2 (DT-31) HYGIENIC CLAMP JOINT: SOLID END CAP

DT-4.1.5-2 (DT-31) MIT KLEMMSTUTZEN: DECKEL



All prices ex works  
Alle Preise ab Werk

| Nominal Size (d) /<br>Nennweite |        | A     |      | Flange Dimensions /<br>Flanschabmessung |       | Order Code / Artikel-Nr.<br>Price / Preis |   |
|---------------------------------|--------|-------|------|---|-------|---|---|
| Inch                            | mm     | Inch  | mm   | Inch                                    | mm    | SF1                                       | SF4                                       |
| 1/4                             | 6,35   | 0,187 | 4,7  | 0,984                                   | 25,0  | <b>5-2a1</b><br>3,47 €                    | <b>5-2a4</b><br>7,47 €                    |
| 3/8                             | 9,53   | 0,187 | 4,7  | 0,984                                   | 25,0  | <b>5-2b1</b><br>3,47 €                    | <b>5-2b4</b><br>7,47 €                    |
| 1/2                             | 12,70  | 0,187 | 4,7  | 0,984                                   | 25,0  | <b>5-2c1</b><br>3,47 €                    | <b>5-2c4</b><br>7,47 €                    |
| 3/4                             | 19,05  | 0,187 | 4,7  | 0,984                                   | 25,0  | <b>5-2d1</b><br>3,47 €                    | <b>5-2d4</b><br>7,47 €                    |
| 1                               | 25,40  | 0,250 | 6,4  | 1,339                                   | 34,0  | <b>5-2e11</b><br>On request / auf Anfrage | <b>5-2e41</b><br>On request / auf Anfrage |
| 1                               | 25,40  | 0,250 | 6,4  | 1,984                                   | 50,5  | <b>5-2e1</b><br>6,27 €                    | <b>5-2e4</b><br>12,30 €                   |
| 1 1/2                           | 38,10  | 0,250 | 6,4  | 1,984                                   | 50,5  | <b>5-2f1</b><br>6,27 €                    | <b>5-2f4</b><br>12,30 €                   |
| 2                               | 50,80  | 0,250 | 6,4  | 2,516                                   | 64,0  | <b>5-2g1</b><br>8,26 €                    | <b>5-2g4</b><br>15,30 €                   |
| 2 1/2                           | 63,50  | 0,250 | 6,4  | 3,047                                   | 77,5  | <b>5-2h1</b><br>11,47 €                   | <b>5-2h4</b><br>22,52 €                   |
| 3                               | 76,20  | 0,250 | 6,4  | 3,579                                   | 91,0  | <b>5-2i1</b><br>15,35 €                   | <b>5-2i4</b><br>28,44 €                   |
| 4                               | 101,60 | 0,312 | 7,9  | 4,682                                   | 119,0 | <b>5-2j1</b><br>26,17 €                   | <b>5-2j4</b><br>42,42 €                   |
| 6                               | 152,40 | 0,437 | 11,1 | 6,570                                   | 167,0 | <b>5-2k1</b><br>80,41 €                   | <b>5-2k4</b><br>115,11 €                  |

Further dimensions on request. Subject to alteration.  
Weiter Abmessungen auf Anfrage. Technische Änderungen vorbehalten.